

Phenotyping: Osteoporosis Panel

Charles River Discovery Services provides a variety of therapeutic phenotyping panels to assist with characterizing your unique models.

Our Osteoporosis Panel includes:

Basic Characterization

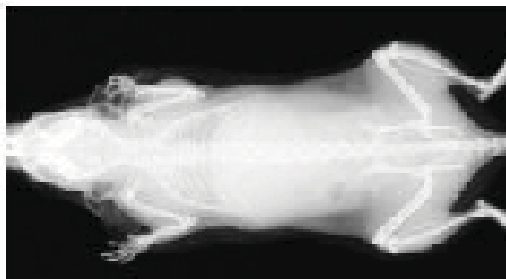
- *PhenoFirst® Panel*

PhenoFirst® includes *in vivo* evaluation, basic pathology, and basic clinical pathology. This panel targets organs of the thyroid and parathyroid glands, sternum, stifle joint, vertebrae, and femur. The minimum recommended sample size is three homozygous or knockout mice and three wild type controls that are matched for age, sex, health status, and genetic background.

Additional Characterization

- *Body Composition Assessment*

A DEXA Scan is performed to determine percent total body fat, total bone mineral density, and total bone mineral concentration. In addition, bone mineral density and concentration are analyzed in two focal regions of interest: the spine and femur. The minimum recommended sample size is 10 homozygous or knockout mice and 10 wild type controls that are matched for age, sex, health status, and genetic background.



Radiograph of a mouse

- *Disease Progression Study*

A breeding colony is set up at Charles River to produce mice for a temporal body composition study. Monthly body composition measurements begin at ten weeks of age for all offspring. The data generated is used to characterize disease progression. The minimum recommended sample size is five breeding pairs that produce sufficient litters to generate 10 homozygous or knockout mice and 10 wild type controls that are matched for age, sex, health status, and genetic background.

- *Rodent Multi-Analyte Profiles*

Each animal is screened for 60 plasma biomarker levels. The minimum recommended sample size is five homozygous or knockout mice and five wild type controls that are matched for age, sex, health status, and genetic background.

Customized Characterization

We recognize that research goals vary. Our team of laboratory animal professionals is available to customize a model characterization plan that meets individual needs and helps you achieve your goals more efficiently.

Available Panels

In addition to the Osteoporosis Panel, Discovery Services provides targeted phenotyping to characterize obesity, metabolism, hypertension, diabetes, reproduction issues, embryonic lethality, respiratory function, Huntington's disease, and neurodegenerative disease in your unique model.

For more information, please call 1.877.CRIVER.1 or e-mail askcharlesriver@crl.com.