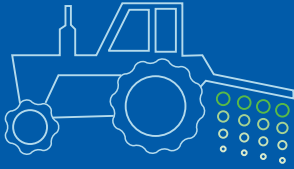


ENDOCRINE DISRUPTION

Many chemical substances and mixtures have to be evaluated and tested for their potential to affect the endocrine systems of mammals and non-mammalian species. Disruption of endocrine systems can result in adverse effects on reproduction and development. Because of the increasing concern for endocrine disrupting effects, many regulations have now incorporated the requirement on reproduction, development, endocrine-related pathways, and overall health status to assess whether a chemical has the potential to be an endocrine disruptor.



Plant Protection Products
(EPA, EChA)



Agrochemicals
(EFSA)



Biocides
(EChA)

Availability of tests at CRL



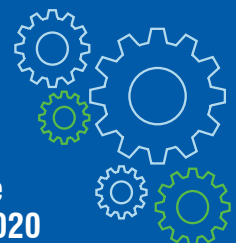
Comprehensive portfolio services
and tests readily available

Charles River is the frontline



10

New tests to be implemented in 2020



Areas of expertise

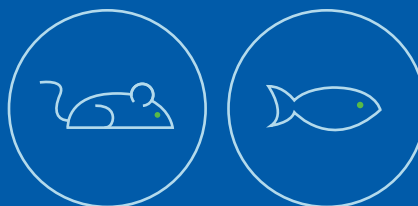
Our team of scientific and technical experts design and conduct all testing and procedures in accordance with international guidelines in a GLP environment. Our Regulatory Affairs specialists provide advice, consultation and dossier preparation according to the latest requirements

***in vitro* Toxicology**



>10 years of
experience

***in vivo* Toxicology**



>30 years of
experience

Regulatory services



>20 years of
experience



Integrated laboratory services:
Necropsy, pathology, histology,
bioanalyses and chemical analysis

Regulatory services:
ED assessment, data evaluation, and
interpretation are performed according to
EFSA/ECHA guidance (2018)

