



**MICROBIAL SOLUTIONS**

## Celsis Accel® System for Rapid Microbial Screening

### Benefits of the Accel® System

- Shortened production cycles
- Reduced inventory requirements
- Decreased working capital requirements
- Faster release of product to market
- Lower safety stock needs
- Faster response to contamination events

Charles River is proud to announce the new Celsis Accel®, a rapid microbial screening system for pharmaceutical and home and beauty product manufacturers. The Accel® takes the robustness and ease of use of the widely adopted Celsis® Advance II™ platform and packages it into a small footprint specifically designed for manufacturers with mid-range test volumes.

Utilizing our proprietary reagent technology, the system delivers quality control results in just 24 hours for micro limits testing and 4-7 days for sterility testing, enabling users to reduce micro hold times and quickly release to market. This eliminates days from the production cycle time, decreases inventory and working capital requirements, reduces warehousing costs, and improves overall profitability.

### Quantifiable Savings

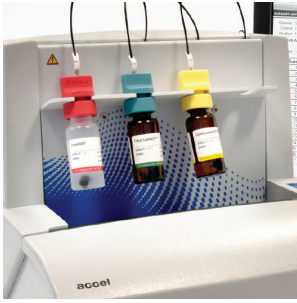
With our Financial Impact Assessment (FIA), Charles River can evaluate the cost savings of implementing a Celsis Accel® system in a particular manufacturing facility. Using readily available company-specific information – including the daily value of finished goods, testing volume, and the number of days products are held in quarantine – the FIA projects the five-year Net Present Value (NPV) of a company's investment in the Celsis® system. The five-year NPV for a manufacturing facility with mid-range test volumes is typically in excess of \$500,000, with even greater value for larger volume facilities or rapid sterility applications.

### Celsis Accel® Specifications

#### Remote access

A secure "Remote User Option" allows monitoring of product quality testing results from multiple locations and includes full access to the suite of data analysis tools.

EVERY STEP OF THE WAY



### Celsis Accel® Luminometer

- Voltage: 100-240 V
- Hertz: 50 or 60 Hz
- Capacity: Up to 30 assays per hour

### Instrument Dimensions

- (w) 13" x (h) 14.5" x (d) 20.5"
- (w) 33 cm x (h) 37 cm x (d) 52 cm
- Weight: 53 lbs/24 kg

### Compatibility

- Validated on Microsoft® Windows® XP Professional, Windows® 7 Professional and Windows® 8 Pro

### Data analysis

Celsis Accel.im software provides a powerful suite of tools to manage data archiving, results analysis and reporting. Users and remote users can quickly query results to find specific data based on multiple criteria, design and generate graphs for easy data trending analysis (including on-screen preview), and export reports to common file types such as \*.txt and \*.csv.

### User interface

The software utilizes a familiar top-ribbon/drop-down menu design for intuitive ease of use. Reagent levels are easily monitored with a color-coded graphic display that remains on-screen at all times, along with a workload timer.

### Carousel architecture

Offering fast and precise movement, the 30-position carousel utilizes a tube-based platform for maximum flexibility with sample size and sensitivity.

### Ergonomic design

All user-accessible features are ergonomically positioned in front of the instrument for easy access.

### Added security with one-click lockout

In addition to the option of locking data once the run begins, users have the ability to lock the application with a single mouse click in order to ensure that the run is not interrupted.

### Fourth injector capability

The Accel® system comes standard with three injectors but has the option of a fourth injector, giving the system additional flexibility to incorporate new reagent technology.

### On-screen help

A comprehensive topic-based and searchable help file provides on-screen instructions for performing routine tasks, as well as detailed information about a range of topics from software customization to user administration.

### Modular electronics

The use of modular electronics simplifies service, customization and upgrading.

### Data export

Accel.im can export an individual batch or the entire workload to an array of file formats used by LIMS platforms.

### User administration and security

Administration utility allows efficient management of user access and function permissions.

### System log

An unlimited system log records events by each user and maintains records for the lifetime of the installation, in compliance with 21 CFR Part 11 and Annex 11 regulatory requirements.