

FOUNDED IN 1947

WE CURRENTLY OPERATE

70 FACILITIES



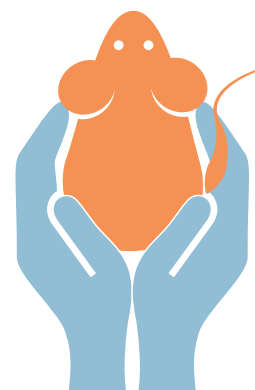
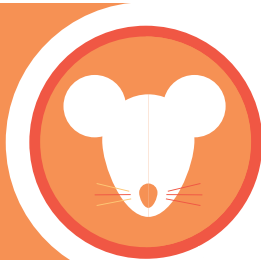
16 COUNTRIES

We supported the development of **~70%** of the drugs approved by the FDA in 2016



BASIC RESEARCH RELIABLE ANIMALS MEAN RELIABLE RESEARCH

1 out of 2 animal models produced for preclinical research globally comes from Charles River



More than 130,000 mice from more than 2,700 unique strains are cared for by our genetically engineered models and services staff in an average week

DISCOVERY A STRATEGIC PARTNER APPROACH

OVER PATENTS 320

have been generated for our partners and more than 70 development candidates have been delivered by our scientists in the last 15 years



Nearly 30% of our development candidates have progressed to

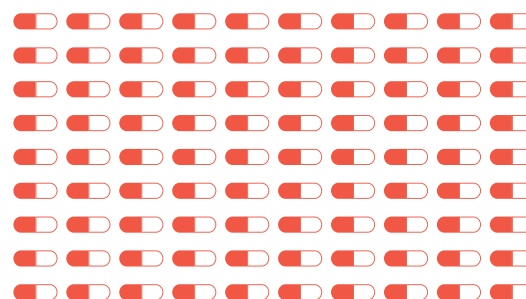
CLINICAL PROOF-OF-CONCEPT OR BEYOND

SAFETY ASSESSMENT NO MATTER YOUR ENDPOINTS, WE'LL HELP YOU REACH THEM

22,376 reports shipped last year from global sites, including:



Approximately



120 investigational new drug (IND) programs are conducted annually

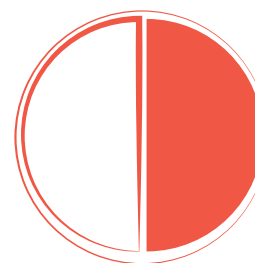
MANUFACTURING SUPPORTING THE FINAL PUSH TO MARKET



MORE THAN 20,000 biologic testing reports are sent each year and over 200 licensed products are supported by our biologics testing solutions team



IN 2016 OVER 1 MILLION FDA-licensed cartridges have been produced for the 15-minute endotoxin testing assay with the Endosafe®-PTS™ and Endosafe®-MCS™



MORE THAN 330,000 microbial samples, including over 66,000 with same-day-turnaround, were identified by Charles River Accugenix® in 2016