

# **ENVIRONMENTAL RISK ASSESSMENT AND ENDOCRINE DISRUPTION**

---

# OUTLINE OF THE PRESENTATION

1 INTRODUCTION TO ENVIRONMENTAL RISK ASSESSMENT

2 ENDOCRINE DISRUPTION IN ERA

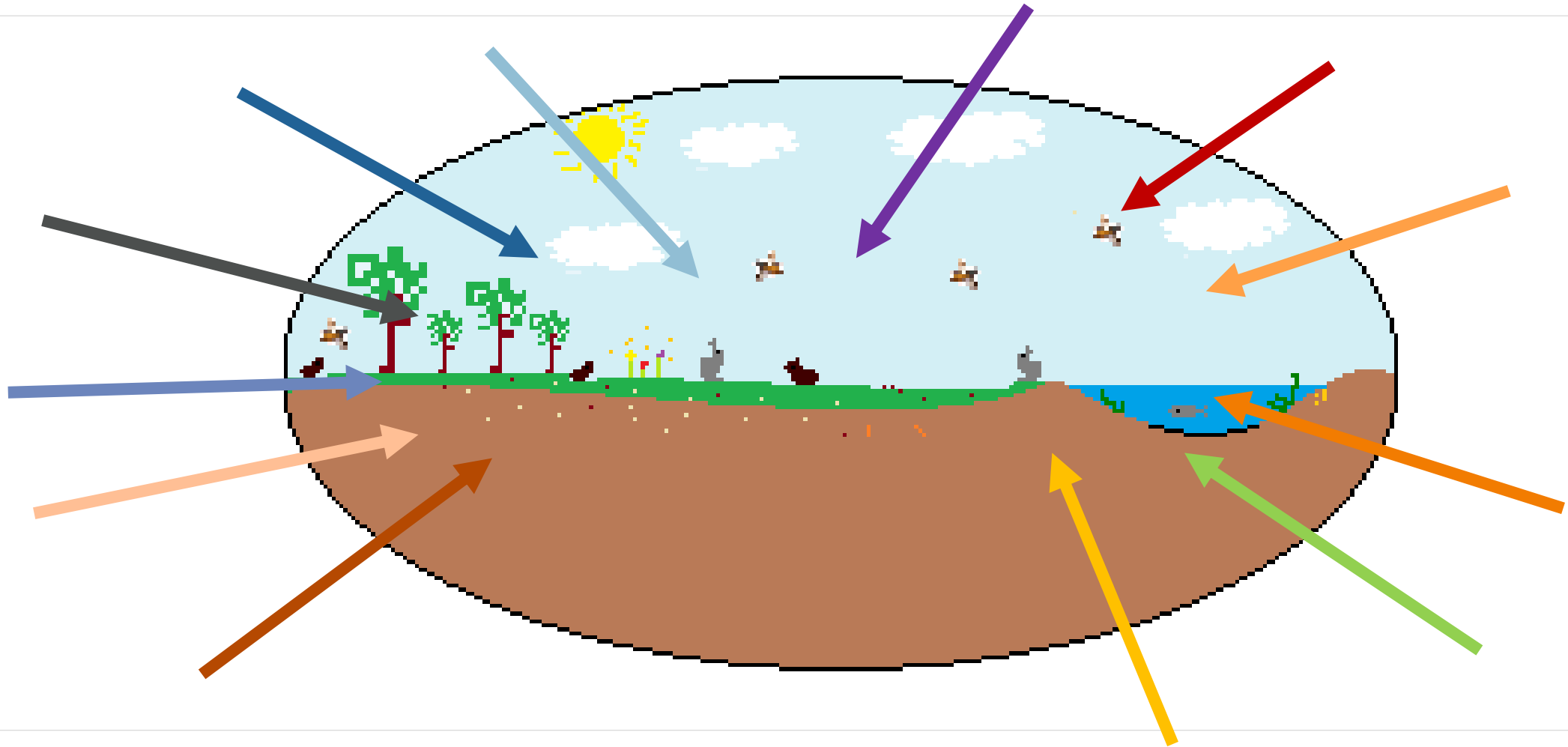
---

# ENVIRONMENTAL RISK ASSESSMENT

---

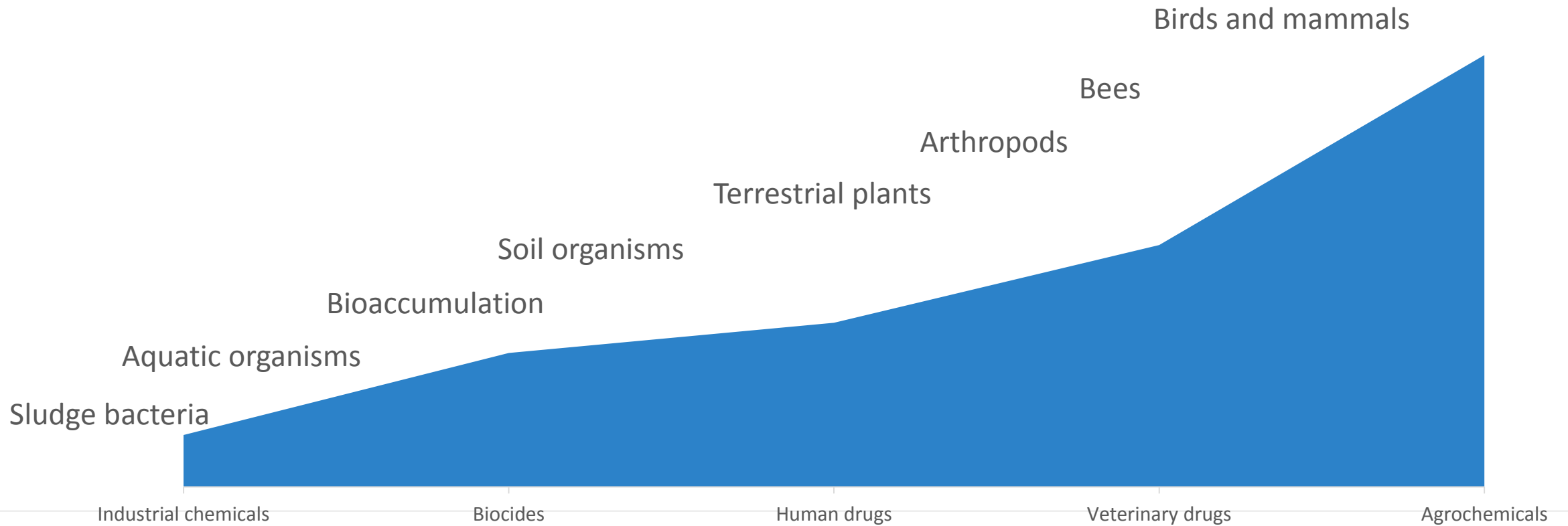
# WHY ERA?

What does ERA aim at?



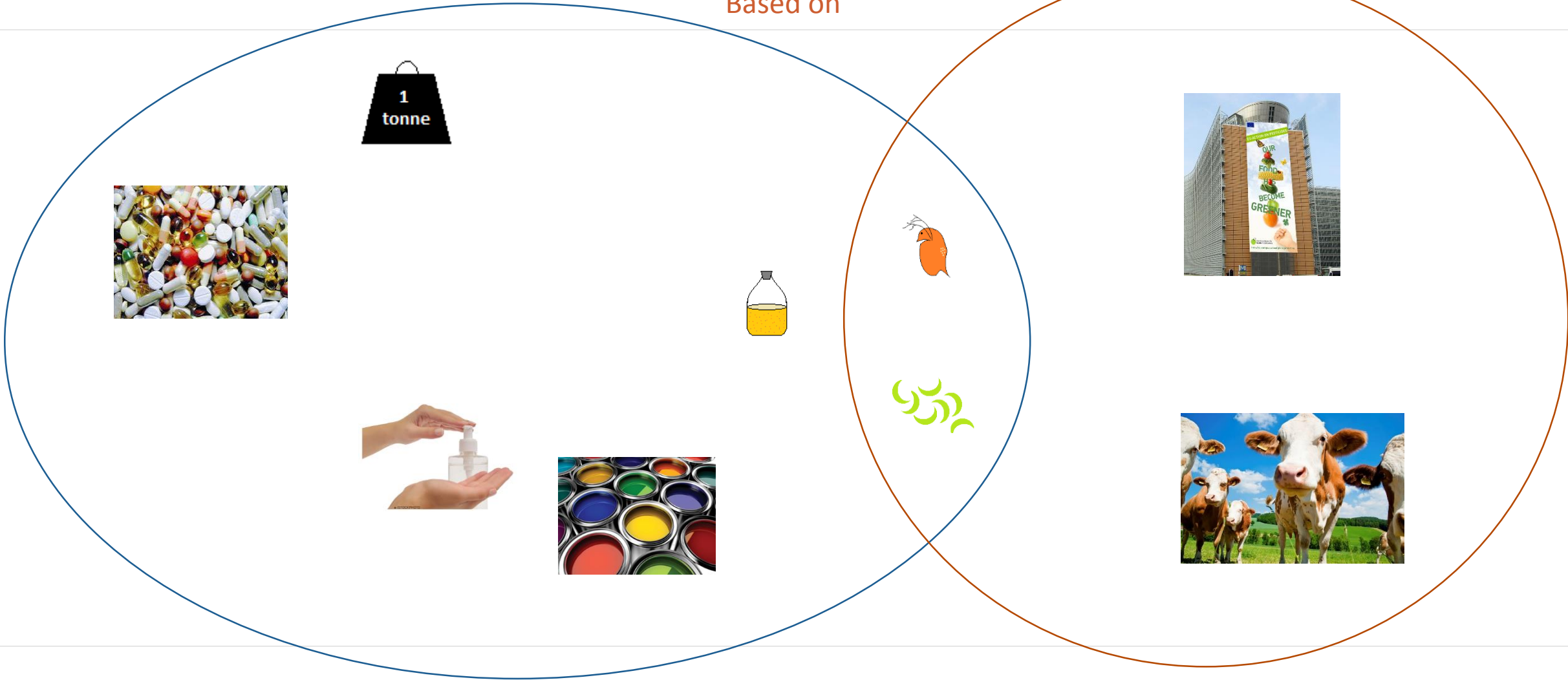
# ERA FOR DIFFERENT KINDS OF CHEMICALS

HOW COMPLEXITY DIFFERS



# DATA REQUIREMENTS

Based on



# RISK ASSESSMENT

How?

1  
tonne



PEC

PNEC



Effect concentrations



# RISK ASSESSMENT BASED ON CONCENTRATIONS

## Aquatic organisms

Concentration in surface water / endpoint or PNEC

Concentration in groundwater?



## Soil organisms

Concentration in soil / endpoint or PNEC

Dry soil?

Pore water?





# RISK ASSESSMENT BASED ON EXPOSURE RATES

## Non-target arthropods (NTAs)

Bees



Oral exposure

Contact exposure

Brood exposure

Nectar, honeydew



All NTAs

In-field and off-field exposure



## Non-target terrestrial plants (NTPs)

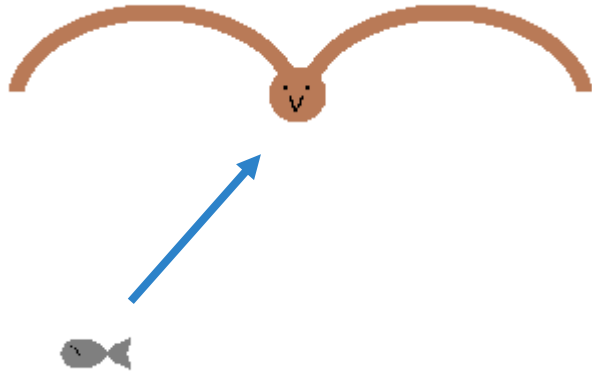
Off-field exposure

In-field exposure?

# RISK ASSESSMENT BASED ON DAILY DIETARY DOSE

## Birds and mammals

Secondary poisoning via fish and earthworms



## Birds and mammals: agrochemicals

Dietary exposure

Drinking water

Secondary poisoning



# CONSEQUENCES

Of the outcome of the RA



Registration

Authorisation

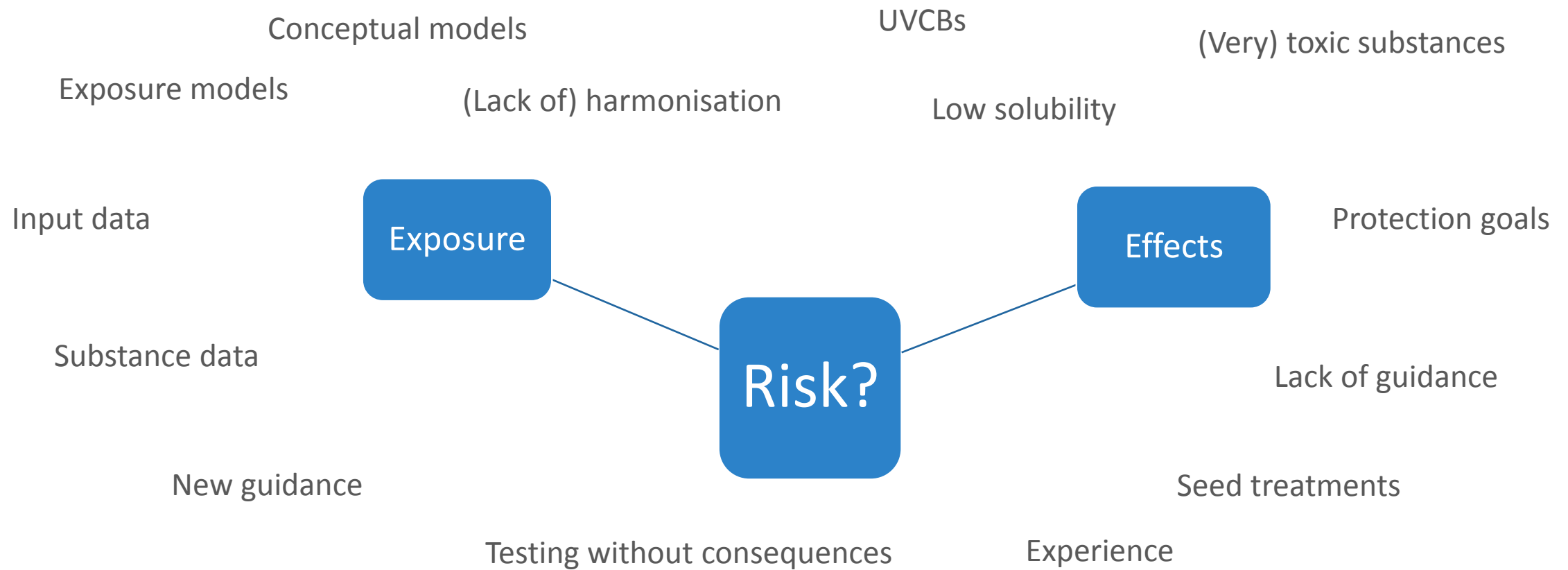


# WHAT IS IN COMMON?

For all kinds of chemicals



# AND WHAT ARE THE CHALLENGES?

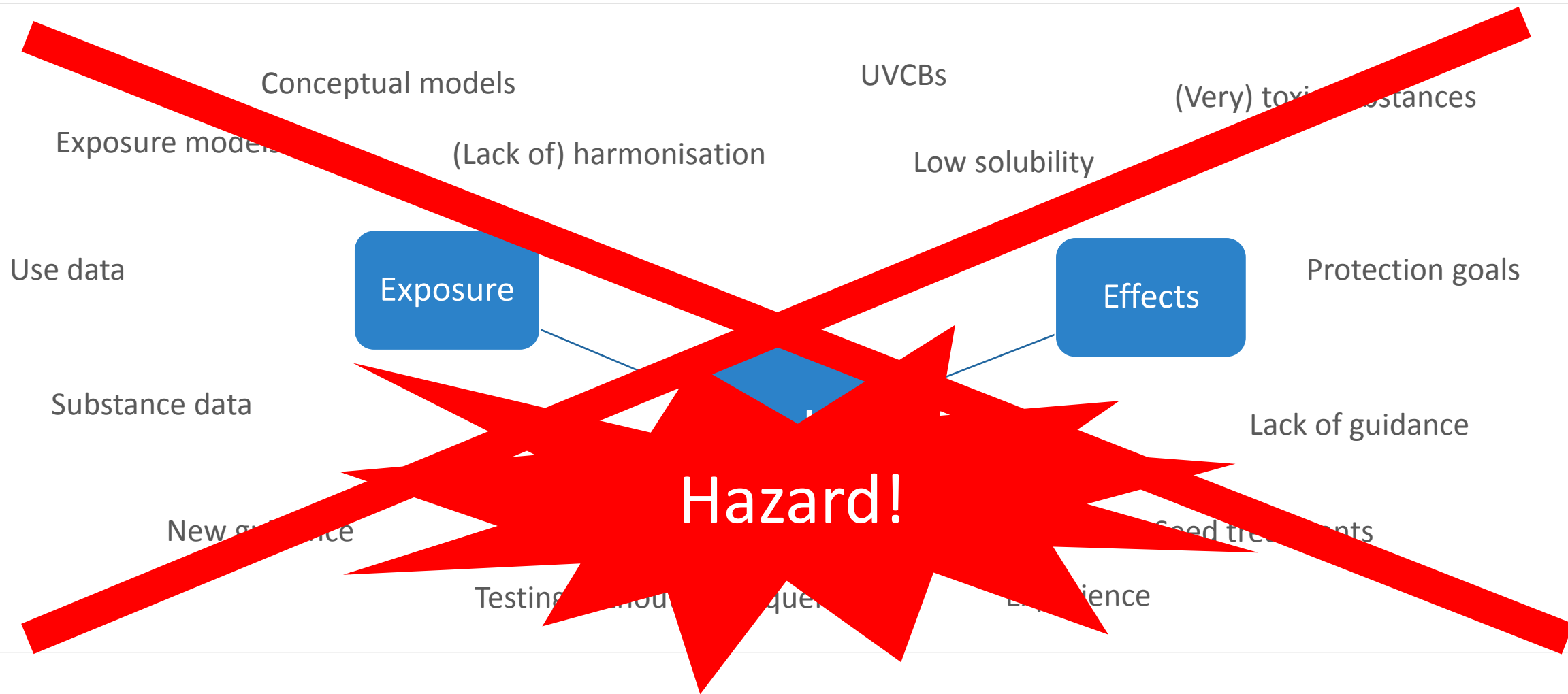


---

# ENDOCRINE DISRUPTION

---

# CHALLENGES IN ERA WITH ED



# HOW TO...?

Testing

Identification



OECD 150

OECD conceptual framework

EMA



EU Commission



ECHA

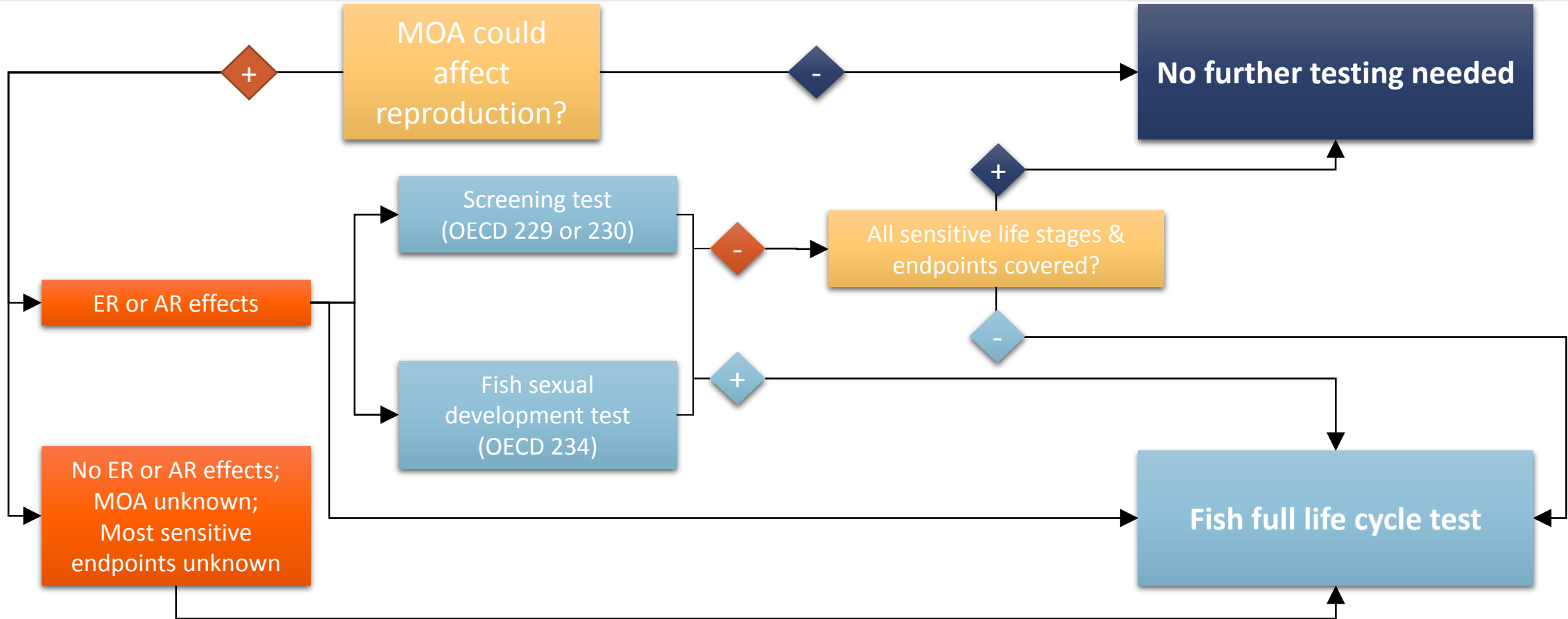


EFSA



# EMA PROCEDURE FOR HUMAN DRUGS

## How to identify an ED



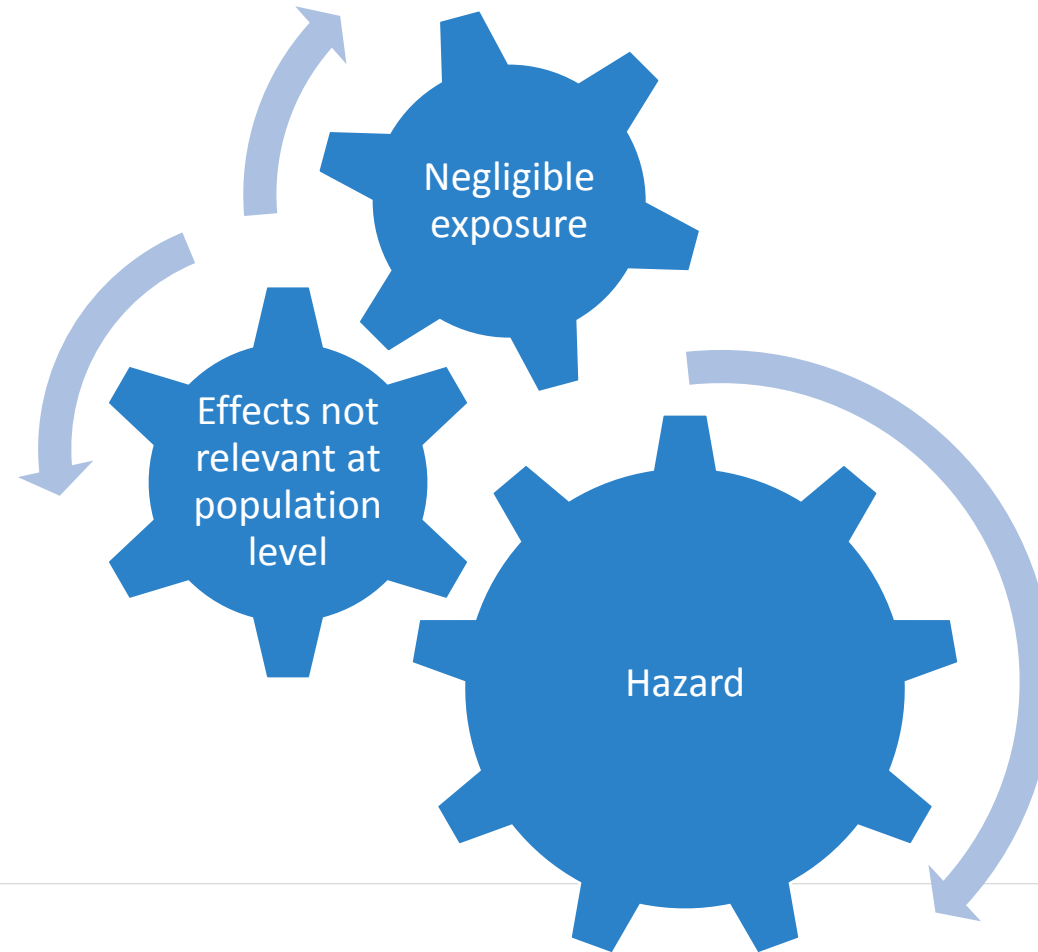
# EU CRITERIA FOR PLANT PROTECTION PRODUCTS

How to identify an ED



# GUIDANCE FOR ASSESSMENT?

How to ...?



# CONTACT US

Daphne de Roode, Regulatory Affairs Manager, [daphne.deroode@crl.com](mailto:daphne.deroode@crl.com)