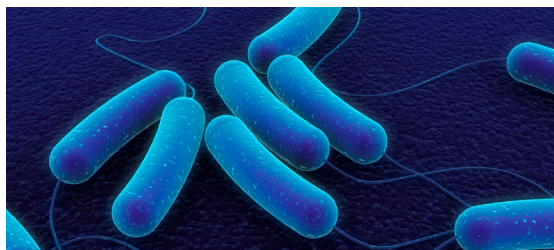
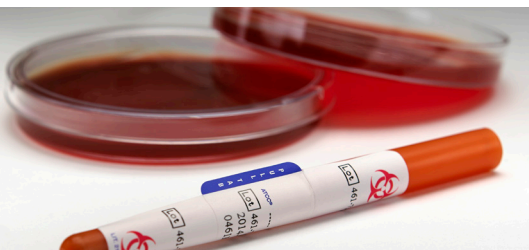


INTRODUCING CHARLES RIVER AXCESS™ SYSTEM CONTROLS



Microbiologics, the world's leading provider of QC microorganisms, has collaborated with Charles River to develop a control panel specifically for their Axcess™ System. Our Charles River Axcess™ Qualification Panel includes everything you need to qualify your system in a convenient, easy-to-use format.

System Qualification Has Never Been Easier!

- Contains the QC strains recommended for the Axcess™ System
- All-in-one KWIK-STIK™ design is user-friendly
- Refrigerated storage is easy and economical
- Online Certificate of Analysis provides detailed strain information
- Traceability to reference cultures ensures authenticity
- One simple catalog number for fast, convenient ordering

Charles River Axcess™ Qualification Panel - Catalog #5227

Includes two KWIK-STIKs of each strain listed below.

- Bacillus subtilis* subsp. *subtilis* ATCC® 6051™*
- Brevundimonas vesicularis* ATCC® 11426™*
- Chryseobacterium indologenes* ATCC® 29897™*
- Curtobacterium pusillum* ATCC® 19096™*
- Deinococcus radiophilus* ATCC® 27603™*
- Enterococcus faecalis* ATCC® 19433™*
- Methylobacterium organophilum* ATCC® 27886™*
- Micrococcus luteus* ATCC® 4698™*
- Proteus vulgaris* ATCC® 29905™*
- Pseudomonas aeruginosa* ATCC® 10145™*
- Ralstonia pickettii* ATCC® 27511™*
- Sphingomonas paucimobilis* ATCC® 29837™*
- Staphylococcus aureus* subsp. *aureus* ATCC® 12600™*
- Staphylococcus epidermidis* ATCC® 14990™*
- Stenotrophomonas maltophilia* ATCC® 13637™*



charles river



ATCC Licensed
Derivative

*The ATCC Licensed Derivative Emblem, the ATCC Licensed Derivative word mark, and the ATCC catalog marks are trademarks of ATCC. Microbiologics Inc. is licensed to use these trademarks and to sell products derived from ATCC® cultures. Look for the ATCC Licensed Derivative® Emblem for products derived from ATCC® cultures.

www.microbiologics.com

Contact us to learn more
320.253.1640
800.599.BUGS(2847)

 **Microbiologics®**
A safer, healthier world.

FLY76 Rev A