

Outbred Mice

Genetic drift is a natural, unavoidable occurrence in any population. The challenge in breeding outbred animals is to maintain the diversity at the level of the individual, yet somehow standardize multiple production colonies of these animals that are geographically separated so that each colony has the same range of genetic variation. Charles River's International Genetic Standardization (IGS) program allows us to implement a global management program that genetically links all of our colonies and ensures that none diverge too far from the others. The end result is that all of the colonies are genetically merged into one large colony that resides in multiple locations around the world.

Black Swiss Mouse

Nomenclature: Crl:NIHBL(S) **Strain Code:** 492 **Origin:** Developed at the NIH Genetic Resource by Dr. Carl Hansen. N:NIH Swiss outbred mice (albino) were crossed to C57BL/6N (black, non-agouti) mice to generate a hybrid black mouse that was heterozygous for the agouti locus. Through a series of test matings and backcrosses (N10) to the N:NIH(S) stock, the agouti gene was eliminated. Received by NCI in 2000. To Charles River in 2010 from NCI. **Coat Color:** Black. **Research Application:** General purpose pigmented outbred mouse, foster mother and pseudopregnant recipients for albino lines

CD-1® IGS Mouse*

Nomenclature: Crl:CD1 (ICR) **Strain Code:** 022 **Origin:** The original group of Swiss mice that served as progenitors of this stock consisted of two male and seven female albino mice derived from a non-inbred stock in the laboratory of Dr. de Coulon, Centre Anticancereux Romand, Lausanne, Switzerland. These animals were imported into the United States by Dr. Clara Lynch of the Rockefeller Institute in 1926. The Hauschka Ha/ICR stock was initiated in 1948 at the Institute for Cancer Research (ICR) in Philadelphia from "Swiss" mice of Rockefeller origin. To Dr. Edward Mirand of Roswell Park Memorial Institute where they were designated as HaM/ICR. To Charles River in 1959. **Coat Color:** White (Albino). **Research Application:** General multipurpose model, safety and efficacy testing, aging, surgical model and pseudopregnancy

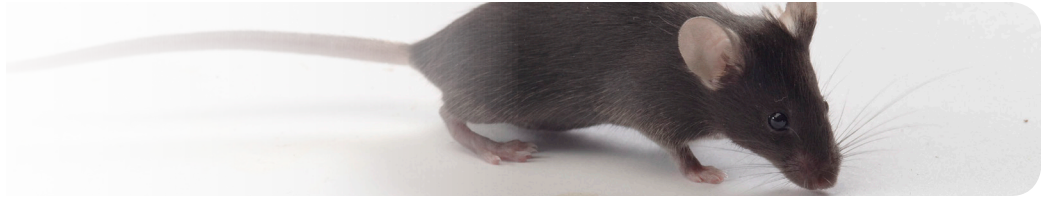
**Also available in Elite health status (strain code 482)*

Mouse Models

With more than 20 breeding facilities around the world, Charles River is the leading global supplier of standard mouse models for biomedical research. Charles River stocks and strains are managed under the International Genetic Standardization (IGS) program, a unique program designed to manage the health and genetics of outbred and inbred strains on a global basis, ensuring that researchers worldwide have access to standardized models, regardless of the production location.

Benefits

- Worldwide availability
- Veterinary and professional support
- VAF/Plus® and VAF/Elite® health status
- Genetics managed under the IGS program



CF-1™ Mouse

Nomenclature: CrI:CF1 **Strain Code:** 023 **Origin:** Obtained by Carworth Farms from a Missouri laboratory. Not descended from “Swiss” mice from Rockefeller Institute (probably of wild albino origin). Intensively inbred by Carworth for over 20 generations. This line was then reduced to a single pair and progeny outbred from that point forward to form a new stock. To Charles River in 1974 from a representative cross section of the Carworth CF-1 colony. **Coat Color:** White (Albino). **Research Application:** General multipurpose model, safety and efficacy testing and infectious disease model

CFW® Mouse

Nomenclature: CrI:CFW(SW) **Strain Code:** 024 **Origin:** This stock resulted from the selective inbreeding by Dr. Leslie Webster using foundation animals from a large colony of Swiss mice maintained at Rockefeller Institute following importation from Switzerland in 1926. To Carworth Farms from Rockefeller Institute. Highly inbred at the time they were acquired by Carworth. This line was reduced to a single pair and progeny outbred from that point forward to form a new stock. To Charles River in 1974 from a representative cross section of the Carworth CFW colony. **Coat Color:** White (Albino). **Research Application:** General multipurpose model and safety and efficacy testing

Cr:ORL Sencar Mouse

Nomenclature: Cr:ORL **Strain Code:** 552 **Origin:** NCI received from Oak Ridge Labs in 1982. They were rederived at Charles River in 2002. To Charles River in 2014. **Coat Color:** White (Albino). **Research Application:** Skin carcinogenesis

SKH1-Elite Mouse

Nomenclature: CrI:SKH1-*Hr^{hr}* **Strain Code:** 477 **Origin:** An uncharacterized/non-pedigreed hairless strain of mice was acquired by Temple University from a small commercial supplier in New York City. To Charles River from the Skin and Cancer Hospital, Temple University, in 1986. This mouse is euthymic and immunocompetent. **Coat Color:** Hairless, albino background. **Research Application:** Wound healing model, dermatology, safety and efficacy testing and hairless transgenic model creation

Sentinel Mouse (Isolator-Maintained)

Nomenclature: CrI:NU(NCr)-*Foxn1^{nu}* and CrI:NU-*Foxn1^{nu}* **Strain Code:** 491 or 089 **Origin:** This immunocompetent mouse is the heterozygous offspring of a heterozygous (*nu/+*) female mated to a homozygous (*nu/nu*) male on either the Athymic Nude or NU/NU background. **Coat Color:** White (Albino). **Research Application:** Multipurpose